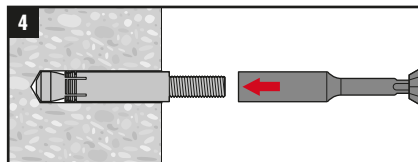
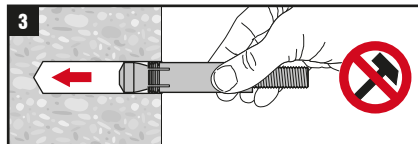
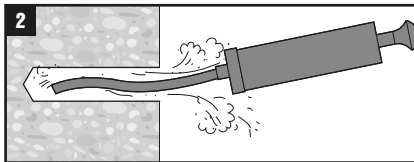
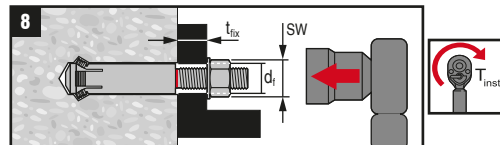
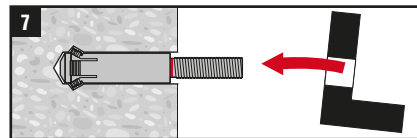
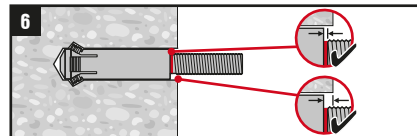
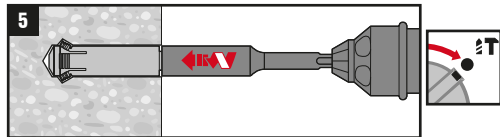


<b>1.1</b>	
	TE40 TE50

<b>1.2</b>		
HMU-PF	TE-C (SDS plus)	TE-Y (SDS Max)
<b>M16x100/30</b>	TE-C-HMU-B M16x100	TE-Y-HMU-B M16x100
<b>M16x100/60</b>	TE-C-HMU-B M16x100	TE-Y-HMU-B M16x100
<b>M16x125/30</b>	TE-C-HMU-B M16x125	TE-Y-HMU-B M16x125
<b>M16x125/60</b>	TE-C-HMU-B M16x125	TE-Y-HMU-B M16x125



<b>4.1</b>		
	TE-C (SDS plus)	TE-Y (SDS Max)
	TE-C-HMU-ST-M16	TE-Y-HMU-ST-M16



<b>8.1</b>	HMU-PF	$t_{fix}$	SW	$T_{inst}$	$d_f$
	M16x100/30	30	24	120 Nm (89 ft-lb)	18mm
	M16x100/60	60	24	120 Nm (89 ft-lb)	18mm
	M16x125/30	30	24	120 Nm (89 ft-lb)	18mm
	M16x125/60	60	24	120 Nm (89 ft-lb)	18mm